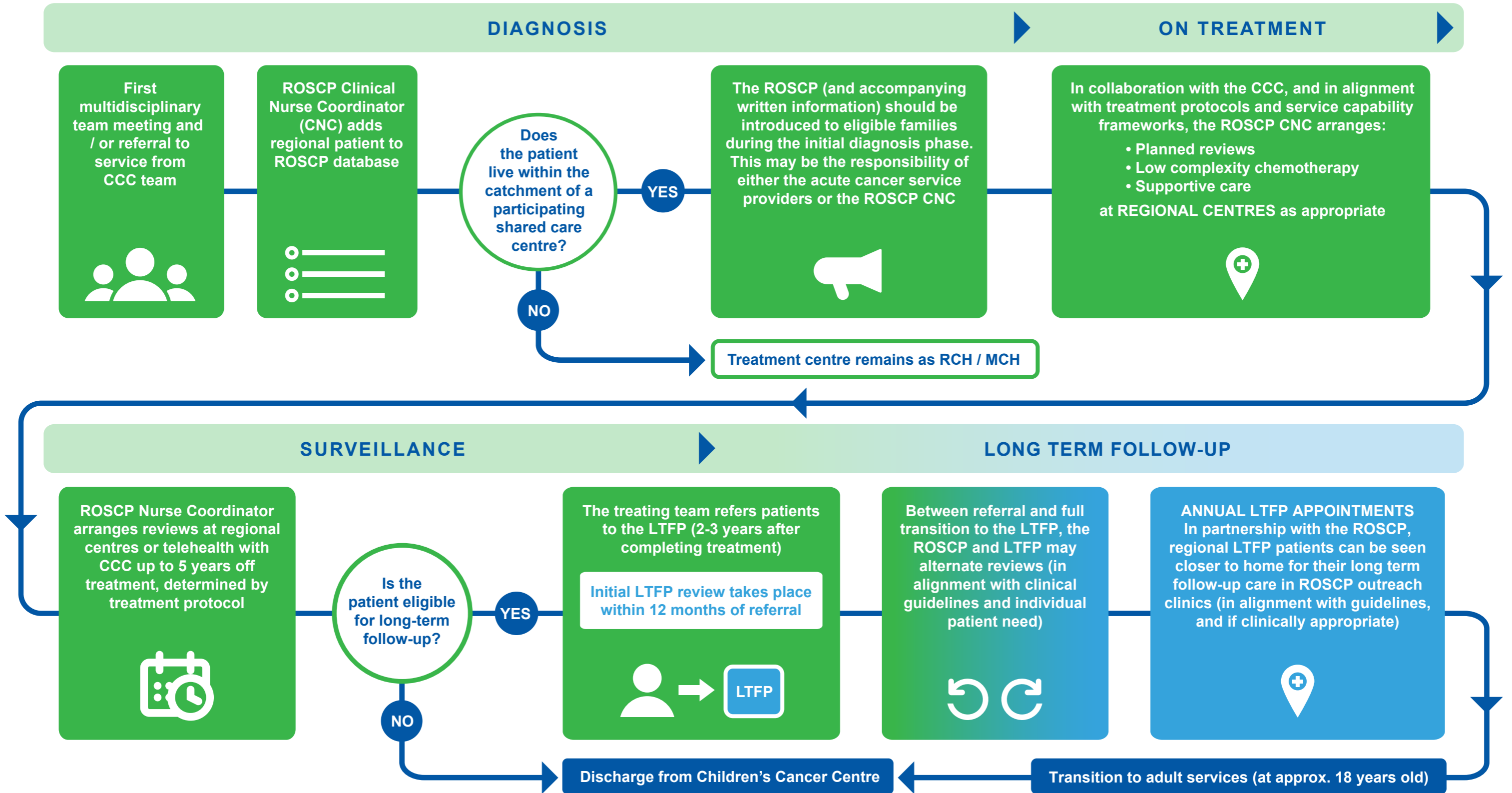


Regional Outreach and Shared Care Program - Patient Care Pathway

The goal of the Regional Outreach and Shared Care Program (ROSCP) is to provide care as close to home as possible, when it is safe and appropriate to do so. The program facilitates and supports care between the primary treating centre and nine regional centres caring for children and adolescents with cancer, and is supported by the Sporting Chance Cancer Foundation.



CCC - Children's Cancer Centre
 LTFP - Long Term Follow-up Program
 MCH - Monash Children's Hospital
 RCH - The Royal Children's Hospital

■ Patient in care of the CCC
 ■ Patient in care of the LTFP